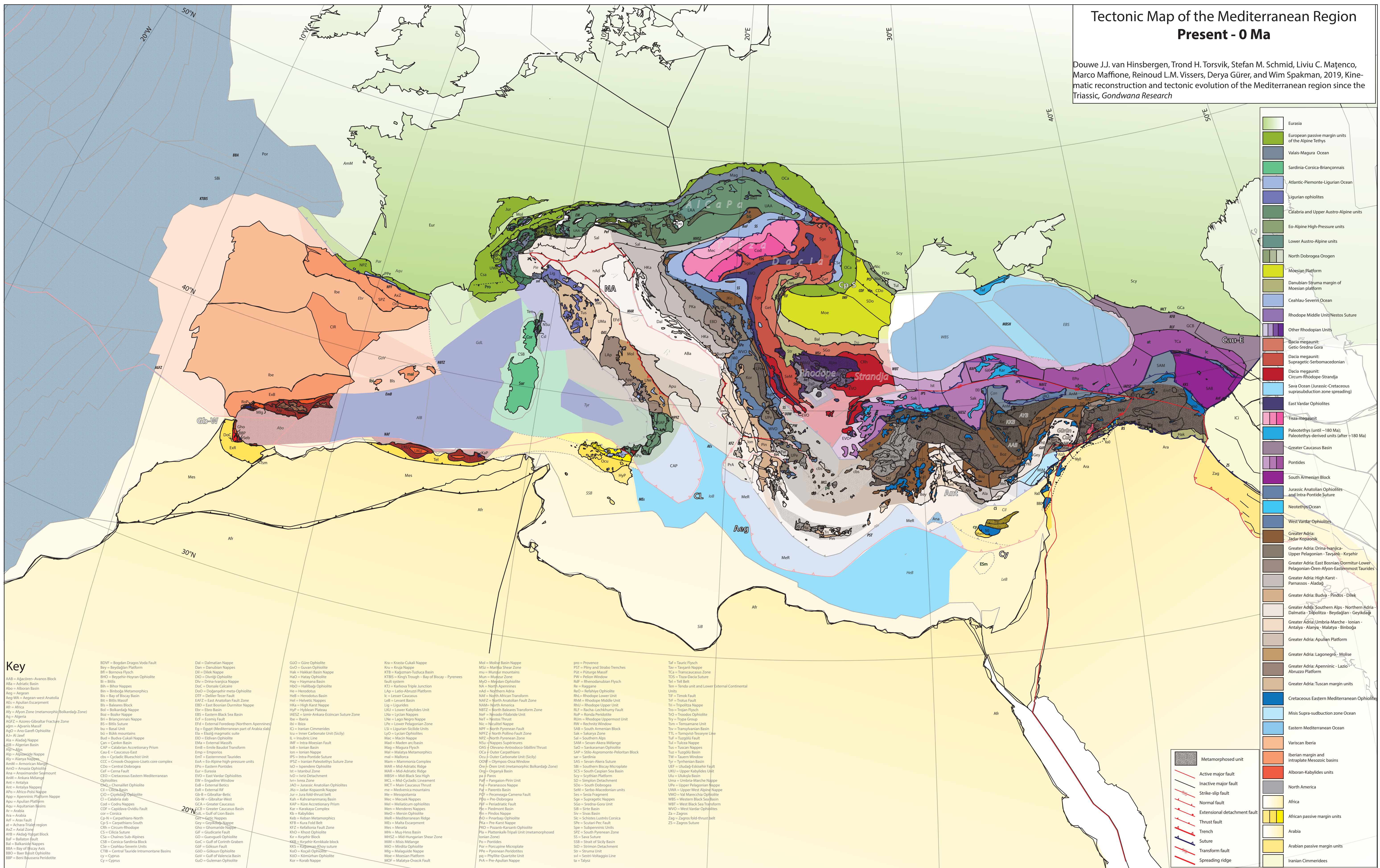


# Tectonic Map of the Mediterranean Region

## Present - 0 Ma

Douwe J.J. van Hinsbergen, Trond H. Torsvik, Stefan M. Schmid, Liviu C. Mañenco, Marco Maffione, Reinoud L.M. Vissers, Derya Güler, and Wim Spakman, 2019, Kinematic reconstruction and tectonic evolution of the Mediterranean region since the Triassic, *Gondwana Research*



- |  |   |
|--|---|
|  | Eurasia   |
|  | European passive margin units of the Alpine Tethys  |
|  | Valais-Magura Ocean   |
|  | Sardinia-Corsica-Briançonnais   |
|  | Atlantic-Piemonte-Ligurian Ocean  |
|  | Ligurian ophiolites   |
|  | Calabria and Upper Austro-Alpine units  |
|  | Eo-Alpine High-Pressure units   |
|  | Lower Austro-Alpine units   |
|  | North Dobrogea Orogen   |
|  | Moesian Platform  |
|  | Danubian-Struma margin of Moesian platform  |
|  | Ceahlau-Severin Ocean   |
|  | Rhodope Middle Unit/Nestos Suture   |
|  | Other Rhodopian Units   |
|  | Dacia megacrust: Getic-Sredna Gora  |
|  | Dacia megacrust: Supragetic-Serbo-macedonian  |
|  | Dacia megacrust: Circum-Rhodope-Strandja  |
|  | Sava Ocean (Jurassic-Cretaceous suprasubduction zone spreading)                             |
|  | East Vardar Ophiolites  |
|  | Tisza megacrust   |
|  | Paleotethys (until ~180 Ma)   |
|  | Paleotethys-derived units (after ~180 Ma)   |
|  | Greater Caucasus Basin  |
|  | Pontides  |
|  | South Armenian Block  |
|  | Jurassic Anatolian Ophiolites and Intra-Pontide Suture                                      |
|  | Neotethys Ocean   |
|  | West Vardar Ophiolites  |
|  | Greater Adria: Jadar Kopanik  |
|  | Greater Adria: Drina-Ivanjica-Upper Pelagonian - Tavşanlı - Kirsehir                        |
|  | Greater Adria: East Bosnian-Dormitor-Lower Pelagonian-Ören-Alyon-Easternmost Taurides       |
|  | Greater Adria: High Karst - Parnassos - Aladag  |
|  | Greater Adria: Budva - Pindos - Dilek   |
|  | Greater Adria: Southern Alps - Northern Adria - Dalmatia - Thpoltiza - Beydaglan - Geyikdağ |
|  | Greater Adria: Umbria-Marche - Ionian - Antalya - Alanya - Malatya - Binboğa                |
|  | Greater Adria: Apulian Platform   |
|  | Greater Adria: Lagonegro - Molise   |
|  | Greater Adria: Apenninic - Lazio - Abruzzo Platform   |
|  | Greater Adria: Tuscan margin units  |
|  | Cretaceous Eastern Mediterranean Ophiolite  |
|  | Misiz Supra-subduction zone Ocean   |
|  | Eastern Mediterranean Ocean   |
|  | Iberian Iberia  |
|  | Iberian margin and intraplate Mesozoic basins   |
|  | Albanian-Kalyklides units   |
|  | North America   |
|  | Africa  |
|  | African passive margin units  |
|  | Arabia  |
|  | Arabian passive margin units  |
|  | Iranian Cimmerides  |

### Key

- |  |                              |
|--|------------------------------|
|  | Active major fault           |
|  | Inactive major fault         |
|  | Strike-slip fault            |
|  | Normal fault                 |
|  | Extensional detachment fault |
|  | Thrust fault                 |
|  | Trench                       |
|  | Suture                       |
|  | Transform fault              |
|  | Spreading ridge              |