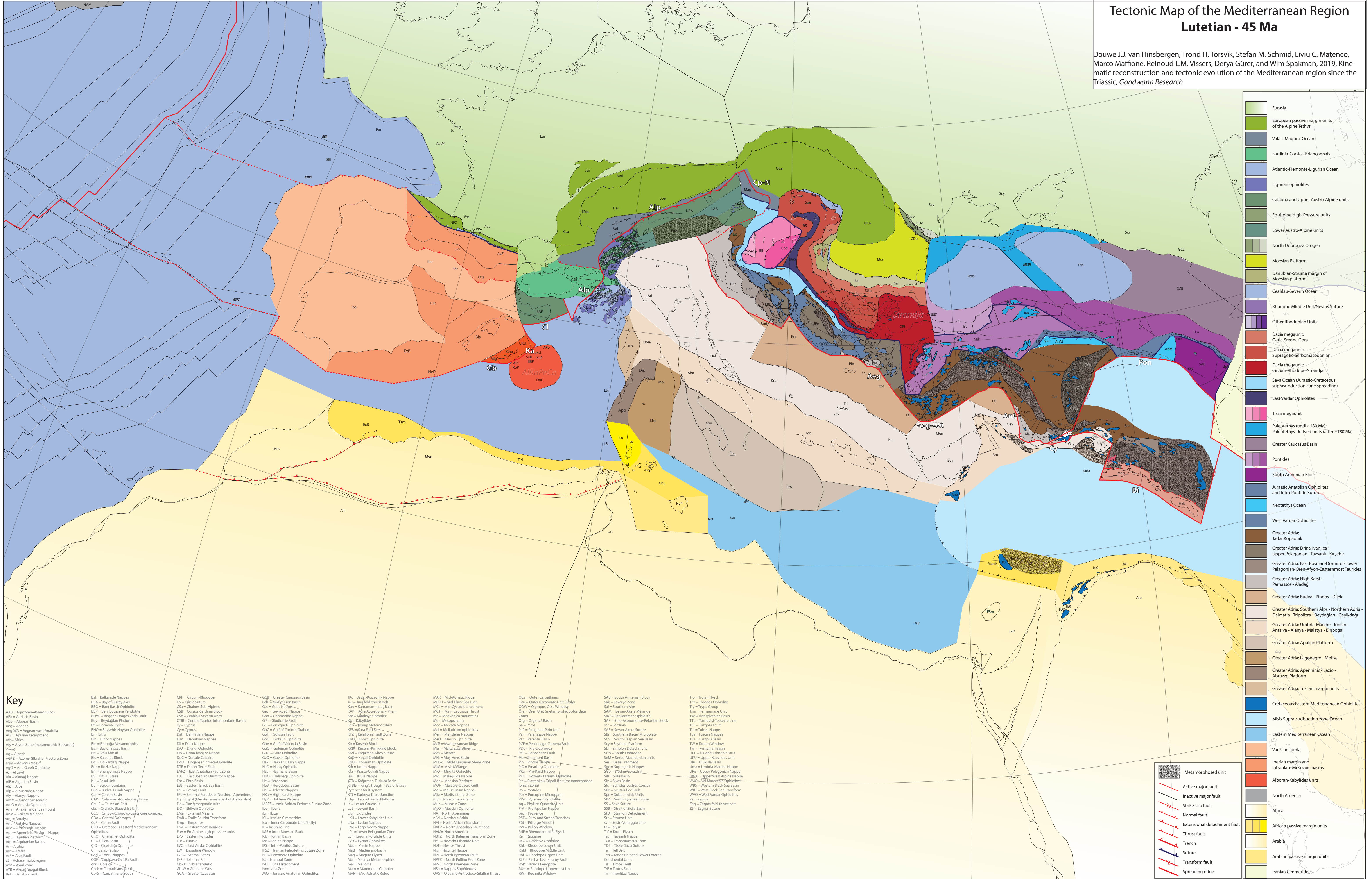


Tectonic Map of the Mediterranean Region Lutetian - 45 Ma

Douwe J.J. van Hinsbergen, Trond H. Torsvik, Stefan M. Schmid, Liviu C. Matenco, Marco Maffione, Reinoud L.M. Vissers, Derya Güler, and Wim Spakman, 2019, Kinematic reconstruction and tectonic evolution of the Mediterranean region since the Triassic, *Gondwana Research*



- Eurasia
- European passive margin units of the Alpine Tethys
- Valais-Magra Ocean
- Sardinia-Corsica-Briançonnais
- Atlantic-Piemonte-Ligurian Ocean
- Ligurian ophiolites
- Calabria and Upper Austro-Alpine units
- Eo-Alpine High-Pressure units
- Lower Austro-Alpine units
- North Dobrogea Orogen
- Moesian Platform
- Danubian-Struma margin of Moesian platform
- Ceahlau-Severin Ocean
- Rhodope Middle Unit/Nestos Suture
- Other Rhodopian Units
- Dacia megaunit: Getic-Sredna Gora
- Dacia megaunit: Suprategic-Serbo-Macedonian
- Dacia megaunit: Circum-Rhodope-Strandja
- Sava Ocean (Jurassic-Cretaceous suprasubduction zone spreading)
- East Vardar Ophiolites
- Tisza megaunit
- Palaeotethys (until ~180 Ma); Palaeotethys-derived units (after ~180 Ma)
- Greater Caucasus Basin
- Pontides
- South Armenian Block
- Jurassic Anatolian Ophiolites and Intra-Pontide Suture
- Neotethys Ocean
- West Vardar Ophiolites
- Greater Adria: Jadar Kopanik
- Greater Adria: Drina-Ivanjica-Upper Pelagonian - Tavarni - Kirsehir
- Greater Adria: East Bosnian-Dormitur-Lower Pelagonian-Oren-Alyon-Eastermost Taurides
- Greater Adria: High Karst - Parnassos - Aladag
- Greater Adria: Budva - Pindos - Dilek
- Greater Adria: Southern Alps - Northern Adria - Dalmatia - Tripolizza - Beydağlan - Geyikdağı
- Greater Adria: Umbria-Marche - Ionian - Antalya - Alanya - Malatya - Binboğa
- Greater Adria: Apulian Platform
- Greater Adria: Lagonegro - Molise
- Greater Adria: Apenninic - Lazio - Abruzzo Platform
- Greater Adria: Tuscan margin units
- Cretaceous Eastern Mediterranean Ophiolites
- Misis Supra-subduction zone Ocean
- Eastern Mediterranean Ocean
- Variscan Iberia
- Intrapat margin and Iberian Mesozoic basins
- Albanian-Kabylides units
- Metamorphosed unit
- Active major fault
- Inactive major fault
- Strike-slip fault
- Normal fault
- Extensional detachment fault
- Thrust fault
- Trench
- Suture
- Transform fault
- Spreading ridge

- ### Key
- | | | | | | | | | |
|-----------------------------|----------------------------|------------------------------|---|----------------------------|--------------------------------|--|--------------------------------|--------------------------------|
| AAB = Aegaeon-Avanos Block | Bal = Balkanide Nappes | CRh = Circum-Rhodope | CGa = Greater Caucasus Basin | Jka = Jadar-Kopaonik Nappe | MAR = Mid-Adriatic Ridge | Oca = Outer Carpathians | SAB = South Armenian Block | Tro = Trojan Flysch |
| AbA = Adriatic Basin | BBA = Bay of Bizcay Axis | CS = Clichia Suture | CGL = Coastal Lig. Basin | Jur = Jurassic thrust belt | MBSH = Mid Black Sea High | OCu = Outer Caribate Unit (Sicily) | Tro = Troodos Ophiolite | Tro = Troodos Ophiolite |
| Aba = Alboran Basin | BBO = Beni Basen Ophiolite | CSa = Chalcidic Sub-Alpines | CEt = Cretaceous Eastern Taurides | Kah = Karakoram Complex | MCL = Mel-Cycladic Lineament | OCW = Orontes Orogen | Tyr = Taurus Group | Tyr = Taurus Group |
| Aeg = Aegaeon | BBP = Beni Basen Ophiolite | CSr = Corinthis Sub-Alpines | CEu = Eastern Unit (metamorphic Balkanide Zone) | Kap = Karakoram Complex | Gey = Geyikdağ Nappe | Ore = Oren Unit (metamorphic Balkanide Zone) | Tim = Tirmidzian Basin | Tim = Tirmidzian Basin |
| AegW = Aegean west Anatolia | BBB = Beni Basen Ophiolite | CSE = Corinth-Sardinia Block | CEv = Eastern Vardar | Kar = Karakoram Complex | Org = Organyia Basin | OW = Oren Unit (metamorphic Balkanide Zone) | Tol = Tokos Nappe | Tol = Tokos Nappe |
| AES = Apulian Escarpment | BBn = Beni Basen Ophiolite | CSb = Corinthis Sub-Alpines | CEs = Eastern Serbia | Kre = Karakoram Complex | GIF = Gaudicaria Fault | PA = Paris Basin | Tuf = Tuzgözü Fault | Tuf = Tuzgözü Fault |
| Alp = Alps | BBi = Beni Basen Ophiolite | CSu = Corinth-Sardinia Block | CEm = Eastern Macedonia | Kri = Karakoram Complex | GO = Goussier Ophiolite | PAF = Parangon-Pirin Unit | Tul = Tulakan Nappe | Tul = Tulakan Nappe |
| Alp = Alps | BBb = Beni Basen Ophiolite | CSv = Corinth-Sardinia Block | CEne = Eastern Neogene | Kro = Karakoram Complex | GOc = Gulf of Corinth Graben | PAR = Parnassos Nappe | Tur = Tuzgözü Basin | Tur = Tuzgözü Basin |
| Alp = Alps | BBc = Beni Basen Ophiolite | CSw = Corinth-Sardinia Block | CEpr = Eastern Pyrenees | Kru = Karakoram Complex | GOS = Göksum Ophiolite | PAR = Parnassos Nappe | Tu = Tuscan Nappes | Tu = Tuscan Nappes |
| Alp = Alps | BBd = Beni Basen Ophiolite | CSx = Corinth-Sardinia Block | CEpy = Eastern Pyrenees | Kro = Karakoram Complex | GOV = Gulf of Valencia Basin | PAR = Parnassos Nappe | TW = Taurin Window | TW = Taurin Window |
| Alp = Alps | BBe = Beni Basen Ophiolite | CSy = Corinth-Sardinia Block | CEst = Eastern Tethys | Kro = Karakoram Complex | GOu = Gulf of Ugenti Ophiolite | PAR = Parnassos Nappe | SD = Simion Detachment | SD = Simion Detachment |
| Alp = Alps | BBf = Beni Basen Ophiolite | CSz = Corinth-Sardinia Block | CEtr = Eastern Tethys | Kro = Karakoram Complex | GOD = Gorn Ophiolite | PAR = Parnassos Nappe | SDu = South Dobrogea | SDu = South Dobrogea |
| Alp = Alps | BBg = Beni Basen Ophiolite | CS1 = Corinth-Sardinia Block | CEtr = Eastern Tethys | Kro = Karakoram Complex | GOD = Gorn Ophiolite | PAR = Parnassos Nappe | SEM = Serbian-Macedonian units | SEM = Serbian-Macedonian units |
| Alp = Alps | BBh = Beni Basen Ophiolite | CS2 = Corinth-Sardinia Block | CEtr = Eastern Tethys | Kro = Karakoram Complex | GOD = Gorn Ophiolite | PAR = Parnassos Nappe | Sen = Senia Fragment | Sen = Senia Fragment |
| Alp = Alps | BBi = Beni Basen Ophiolite | CS3 = Corinth-Sardinia Block | CEtr = Eastern Tethys | Kro = Karakoram Complex | GOD = Gorn Ophiolite | PAR = Parnassos Nappe | Sgt = Supracrustal Nappes | Sgt = Supracrustal Nappes |
| Alp = Alps | BBj = Beni Basen Ophiolite | CS4 = Corinth-Sardinia Block | CEtr = Eastern Tethys | Kro = Karakoram Complex | GOD = Gorn Ophiolite | PAR = Parnassos Nappe | Sgt = Supracrustal Nappes | Sgt = Supracrustal Nappes |
| Alp = Alps | BBk = Beni Basen Ophiolite | CS5 = Corinth-Sardinia Block | CEtr = Eastern Tethys | Kro = Karakoram Complex | GOD = Gorn Ophiolite | PAR = Parnassos Nappe | Sgt = Supracrustal Nappes | Sgt = Supracrustal Nappes |
| Alp = Alps | BBl = Beni Basen Ophiolite | CS6 = Corinth-Sardinia Block | CEtr = Eastern Tethys | Kro = Karakoram Complex | GOD = Gorn Ophiolite | PAR = Parnassos Nappe | Sgt = Supracrustal Nappes | Sgt = Supracrustal Nappes |
| Alp = Alps | BBm = Beni Basen Ophiolite | CS7 = Corinth-Sardinia Block | CEtr = Eastern Tethys | Kro = Karakoram Complex | GOD = Gorn Ophiolite | PAR = Parnassos Nappe | Sgt = Supracrustal Nappes | Sgt = Supracrustal Nappes |
| Alp = Alps | BBn = Beni Basen Ophiolite | CS8 = Corinth-Sardinia Block | CEtr = Eastern Tethys | Kro = Karakoram Complex | GOD = Gorn Ophiolite | PAR = Parnassos Nappe | Sgt = Supracrustal Nappes | Sgt = Supracrustal Nappes |
| Alp = Alps | BBo = Beni Basen Ophiolite | CS9 = Corinth-Sardinia Block | CEtr = Eastern Tethys | Kro = Karakoram Complex | GOD = Gorn Ophiolite | PAR = Parnassos Nappe | Sgt = Supracrustal Nappes | Sgt = Supracrustal Nappes |
| Alp = Alps | BBp = Beni Basen Ophiolite | CS0 = Corinth-Sardinia Block | CEtr = Eastern Tethys | Kro = Karakoram Complex | GOD = Gorn Ophiolite | PAR = Parnassos Nappe | Sgt = Supracrustal Nappes | Sgt = Supracrustal Nappes |

