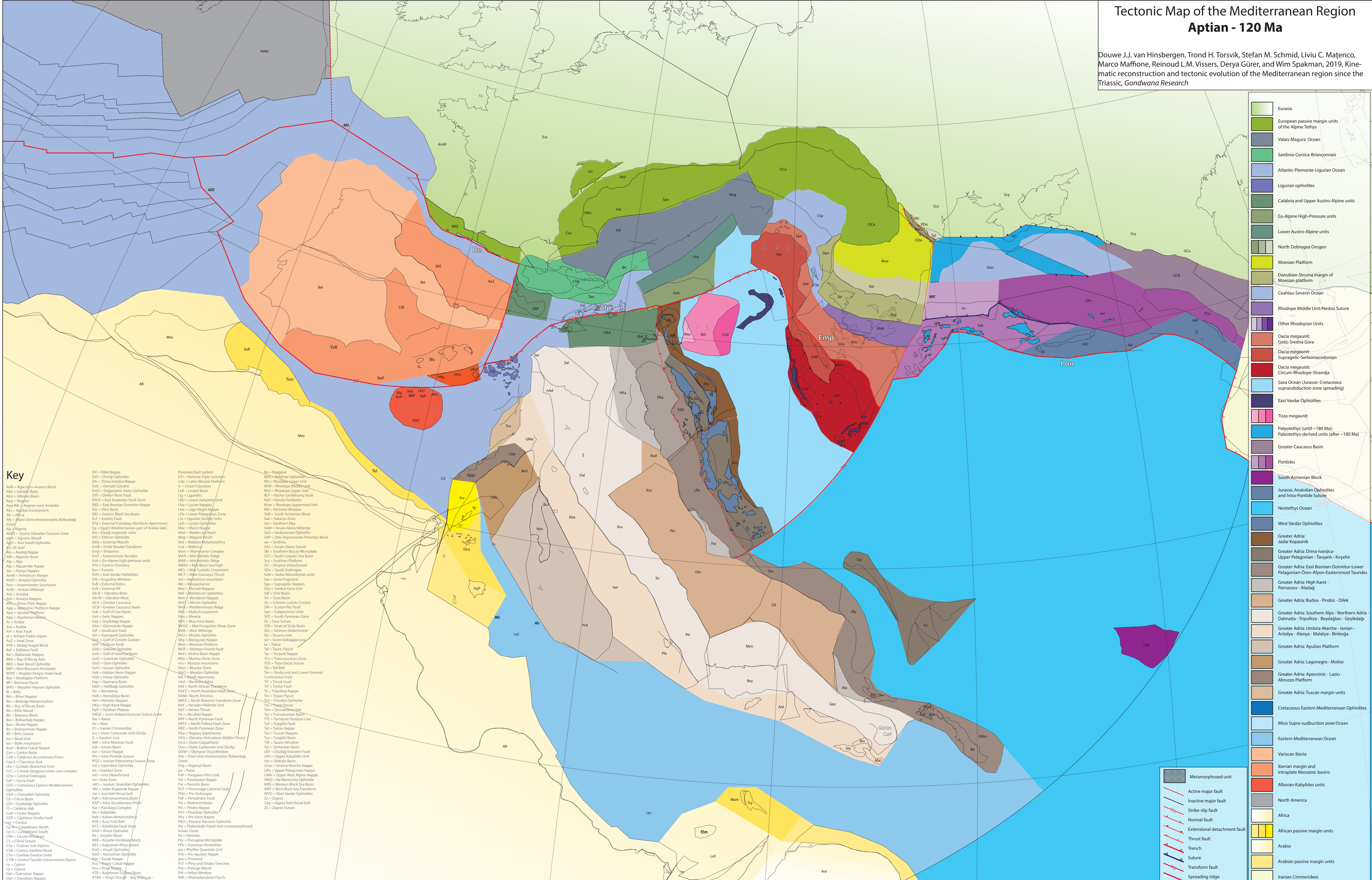


Tectonic Map of the Mediterranean Region Aptian - 120 Ma

Douwe J.J. van Hinsbergen, Trond H. Torsvik, Stefan M. Schmid, Liviu C. Matenco, Marco Maffione, Reinoud L.M. Vissers, Derya Güler, and Wim Spakman, 2019, Kinematic reconstruction and tectonic evolution of the Mediterranean region since the Triassic, *Gondwana Research*



- Eurasia
- European passive margin units of the Alpine Tethys
- Valais-Magra Ocean
- Sardinia-Corsica-Briançonnais
- Atlantic-Piemonte-Ligurian Ocean
- Ligurian ophiolites
- Calabria and Upper Austro-Alpine units
- EO-Alpine High-Pressure units
- Lower Austro-Alpine units
- North Dobrogea Orogen
- Moesian Platform
- Danubian-Struma margin of Moesian platform
- Ceahlau-Severin Ocean
- Rhodope-Unit/Nestos Suture
- Other Rhodopian Units
- Dacia megaunit: Getic-Sredna Gora
- Dacia megaunit: Supragetic-Serbomacedonian
- Dacia megaunit: Circum-Rhodope-Strandja
- Sava Ocean (Jurassic-Cretaceous suprasubduction zone spreading)
- East Vardar Ophiolites
- Tisza megaunit
- Paleotethys (until ~180 Ma); Paleotethys-derived units (after ~180 Ma)
- Greater Caucasus Basin
- Pontides
- South Armenian Block
- Jurassic Anatolian Ophiolites and Intra-Pontide Suture
- Neotethys Ocean
- West Vardar Ophiolites
- Greater Adria: Jadar Kopanik
- Greater Adria: Drina-Ivanjica-Upper Pelagonian - Tavani - Kirsehir
- Greater Adria: East Bosnian-Dormir-Lower Pelagonian-Oren-Alfon-Eastermost-Tauresides
- Greater Adria: High Karst - Parnassos - Aladagi
- Greater Adria: Budva - Pindos - Dilek
- Greater Adria: Southern Alps - Northern Adria - Dalmatia - Tripolizza - Beydaglan - Geyikdagi
- Greater Adria: Umbria-Marche - Ionian - Antalya - Alanya - Malatya - Binboga
- Greater Adria: Apulian Platform
- Greater Adria: Lagonegro - Molise
- Greater Adria: Apenninic - Lazio - Abruzzo Platform
- Greater Adria: Tuscan margin units
- Cretaceous Eastern Mediterranean Ophiolites
- Misis Supra-subduction zone Ocean
- Eastern Mediterranean Ocean
- Variscan Iberia
- Iberian margin and intraplate Mesozoic basins
- Albanian-Kabylides units
- North America
- Africa
- African passive margin units
- Arabia
- Arabian passive margin units
- Iranian Cimmerides

- ### Key
- AAA = Agdzoum-Anavas Block
Aba = Adriatic Basin
Abw = Albanian Basin
Aeg = Aegean
Aeg WA = Aegean-west Anatolia
AEn = AegEAN Escarpment
Afr = Africa
Aly = Alyon Zone (metamorphic Bolkardağı Zone)
Al = Algeria
Alp = Alpes
Alp = Azares-Gibraltar Fracture Zone
Alp = Aganis Massif
AJO = Anjo Garefi Ophiolite
Al-J = Al Janif
Ala = Aladagi Nappe
Alb = Algerian Basin
Alp = Alps
Alp = Alpujarra Nappe
Alp = Alanya Nappes
Alp = American Margin
Alp = Ammassa Ophiolite
Ala = Anaximander Seamount
Alp = Ankara Mélange
Ant = Antalya
Ant = Antalya Nappes
Alp = Africo-Poli Nappe
Alp = Ziboniggi Platform Nappe
Alp = Apulia Platform
Agu = Aquitanian Basin
Ar = Arabia
Ara = Arabia
Afr = Afrik Fault
Ar = Achaia Trialeti region
AzZ = Axial Zone
ATB = Adagi-Tagda Block
BAF = Ballaton Fault
Bal = Balkanides Nappes
BBA = Bay of Biscaya Basin
BBO = Bari Bassist Ophiolite
BDF = Bari-Bousoza Peridotite
Bey = Beydaglan Platform
Bil = Bismara Flysch
BHO = Beysehir-Hoyran Ophiolite
Bil = Bilir Nappes
Bin = Binboğa Metamorphics
Bia = Bay of Bizay Basin
Bis = Birlik Massif
Bal = Balkares Block
Bal = Balkaridagi Nappe
Boz = Bozler Nappe
Bis = Binarçomais Nappe
BS = Bittis Suture
Bas = Basal Unit
Ibi = Ibir mountains
Bud = Budva-Cukali Nappe
Can = Çankırı Basin
CAP = Calabria Accretionary Prism
Cau = Caucasus East
CDB = Cyclic Blue-schist Unit
CCK = Crook-Osovo-Lisli core complex
Cen = Central Dobrogea
Caf = Cerna Fault
CEO = Cretaceous Eastern Mediterranean Ophiolites
CDO = Omalidet Ophiolite
Cl = Cilicia Basin
CO = Cycladii Ophiolite
CI = Calabria Slab
Cod = Codru Nappes
COF = Capadocia-Övürlü Fault
Cor = Corsica
Co-P = Carpathians-North
Co-S = Carpathians-South
CIR = Circum-Ribagöze
CS = Cilicia Suture
Csa = Chalknes Sub-Alpines
CSB = Corsica-Sardinia Block
CSe = Ceahlau-Severin Units
CTB = Central Tauride Intra-montane Basins
Cy = Cyprus
Dal = Dalmatian Nappe
Dan = Danubian Nappes

- Da = Dilek Nappe
DIO = Divriği Ophiolite
Dra = Drina-Ivanjica Nappe
DCC = Donale Calcare
Lc = Lesser Caucasus
Do = Doğangeçir meta-Ophiolite
DFF = Dardanelle-Teser Fault
EAFZ = East Anatolian Fault Zone
EBD = East Bosnian Dumfries Nappe
Ebr = Ebro Basin
EBS = Eastern Black Sea Basin
ECF = Ecemis Fault
EFD = External Foredeep (Northern Apennines)
Eg = Egypt (Mediterranean part of Arabia Slab)
EM = Elysiis magmatic suite
EIO = Eivdian Ophiolite
EMA = External Massifs
EMT = Etna-Basalt Transform
EM = Mallorca
EM = Mamonia Complex
EM = Easternmost Tauresides
EOL = Eo-Alpine high-pressure units
EPO = Eastern Pontides
Eut = Euzois
EVO = East Vardar Ophiolites
EW = Engadine Window
Ext = External Betics
EXB = External Rif
GB = Gibraltar Betic
GBW = Gibraltar-West
GCA = Greater Caucasus
GCB = Greater Caucasus Basin
GCF = Gulf of Lion Basin
GEO = Getic Nappes
GHO = Ghoramda Nappe
GIB = Gibraltarian Ophiolite
GO = Gouevgüzi Ophiolite
GOC = Gulf of Corinth Graben
GAP = Gökdağ Fault
GO = Gökdağ Ophiolite
GOL = Gulf of Vahçes-Basin
GO = Güleman Ophiolite
GÜ = Güne Ophiolite
GO = Güver Ophiolite
Hak = Hakkarı Basin Nappe
HO = Hatay Ophiolite
HA = Hattin Mountains
HO = Halilbag Ophiolite
HAY = Haymana Basin
HBO = Halilbag Ophiolite
HAY = Hattin Mountains
HBO = Halilbag Ophiolite
HB = Hırcan Basin
HBO = Halilbag Ophiolite
HE = Hercynides
HAI = Helvetic Nappes
HKA = High Karst Nappe
NeF = Neovardar Unit
NeF = Nivada Plateau
IASZ = Imer-Ankara-Erzincan Suture Zone
Ber = Beria
Ibu = Ibriza
ICI = İnançlı Mountains
ICu = İncirli Mountains
IIB = Insubric Line
IOB = İnançlı Mountains
ION = İonian Nappe
IPS = İnançlı Mountains
IPZ = İnançlı Mountains
Ist = İstanbul Zone
IVD = İvriç Detachment
Ivn = İvanjica Zone
NIP = İnançlı Mountains
JAD = Jadar Kopanik Nappe
Juk = Jura Fold Thrust Belt
Kah = Kalkanınmanas Basin
KAP = Kure Accretionary Prism
Kar = Karakaya Complex
Kab = Kabayilides
KBB = Keban Metamorphics
KFB = Kura Fold Belt
KIZ = Kafkas-Fırtına Nappe
KIO = Khorat Ophiolite
KIR = Kirsehir Block
KKB = Kizilirmak-Kizilirmak Block
KKZ = Karaman-Khorat Suture
KKO = Khorat Ophiolite
KUR = Kure Nappe
KIZ = Kizilirmak Nappe
KOR = Kocaeli Ophiolite
KÖM = Kömürhan Nappe
KOZ = Kozal Nappe
KÖT = Kömürhan-Cukali Nappe
KUI = Kuzlu Nappe
KTB = Kizilirmak-Tuzla Basin
KTB = King's Trench - Bay of Bizay

- La = Raggane
RDO = Rodope Ophiolite
RHO = Rhodope Lazer Unit
RHM = Rhodope Middle Unit
RHU = Rhodope Upper Unit
RF = Rhaetia-Sachthumy Fault
RUP = Ronda Peridotite
RUM = Rhodope Uppermost Unit
RW = Rhaetian Window
SAB = South Armenian Block
Sal = Sakarya Zone
SAL = Southern Alps
SAM = Seven Akera Mélange
SAD = Sarikamish Ophiolite
SAP = Siles-Apisromite-Poliorhinus Block
sar = Sardinia
SAS = Seven Akera Suture
SB = Southern Biscaya Microplate
SCS = South Caspian Sea Basin
Scy = Scythian Platform
SD = Simion Detachment
SDO = South Dobrogea
SEM = Serbo-Macedonian units
Se = Sesta Fragment
Sge = Supragetic Nappes
SGO = Sredna Gora Unit
SIB = Sinte Basin
Siv = Sivas Basin
Sl = Schistes Lustrés Corsica
Sca = Sicilian Rec Fault
SP = Subpenninic Units
SPZ = South Pyrenean Zone
SS = Sava Suture
SSB = Strait of Sicily Basin
SDF = Simion Detachment
Str = Struma Unit
sv = Sepe-Volgaggia Line
ta = Talysa
Taf = Tauric Flysch
Tav = Tavari Nappe
TCA = Transcaucasus Zone
TDS = Tisza-Dacia Suture
Tel = Teisseyr Belt
Ten = Tendi unit and Lower External Continental Units
TF = Timoc Fault
TF = Troitos Fault
Tir = Tripolizza Nappe
Tro = Trojan Flysch
TIO = Troodos Ophiolite
NeF = Neovardar Unit
Tsm = Termantion Unit
Tyr = Transylvanian Basin
TTL = Tormosee-Ressaye Line
Tuf = Tuşgözü Fault
Tul = Tula Nappe
Tus = Tuscan Nappes
Tuz = Tuşgözü Basin
TW = Tauern Window
TYR = Tyrrhenian Basin
UEF = Uludağ-Eskişehir Fault
URU = Upper Kabylides Unit
Ulu = Uludağ Basin
Uma = Umbria-Marche Nappe
UPU = Upper Pelagonian Nappe
UWA = Upper West Alpine Nappe
Par = Paranaeus Nappe
VMS = Val Marea Ophiolite
WBS = Western Black Sea Basin
PFC = Penevica-Camena Fault
PPO = West Black Sea Transform
WVO = West Vardar Ophiolites
Za = Zagros
Zag = Zagros Fold-thrust belt
ZS = Zagros Suture

- Metamorphosed unit
- Active major fault
 - Inactive major fault
 - Strike-slip fault
 - Normal fault
 - Extensional detachment fault
 - Thrust fault
 - Trench
 - Suture
 - Transform fault
 - Spreading ridge